

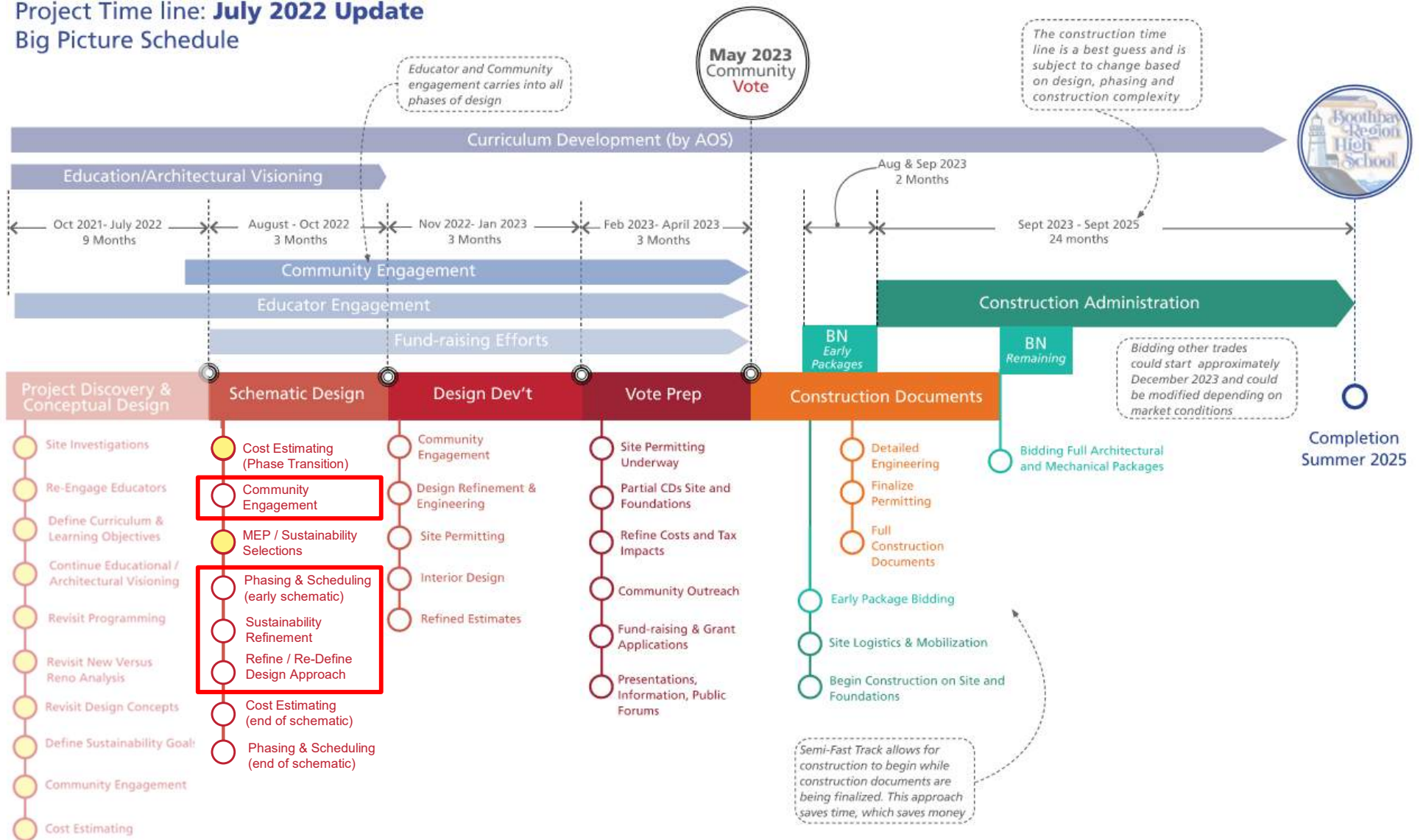


Boothbay-Boothbay Harbor CSD Building Exploratory Committee

September 2022

LAVALLEE | BRENSINGER ARCHITECTS

Project Time line: July 2022 Update Big Picture Schedule



MEETINGS + TASKS: October

STATE FIRE MARSHAL:

- Review floor plans and discuss any potential life safety items

DATE: October 6th

ATTENDANCE: Architects, State Fire Marshal

LOCAL BUILDING DEPARTMENT:

- Review floor plans and discuss any potential code items

DATE: October TBD

ATTENDANCE: Architects, Local Building Department

USER GROUP MEETINGS:

- Meet with smaller focus groups to review specific areas of the building
 - BRES Admin
 - Special Education / Alternate School
 - Art
 - Teachers
 - Students

DATE: Focus group dates are TBD

ATTENDANCE: Select Individuals for each focus group, Architects

BRES SCOPE and MAIN ADMIN SUITE:

- Meet with BRES Admin team to review plan changes
 - Main entrance at upper level
 - Main admin suite at new main entrance
 - Program to be relocated into old admin suite
- Confirm final scope for BRES

DATE: Early October

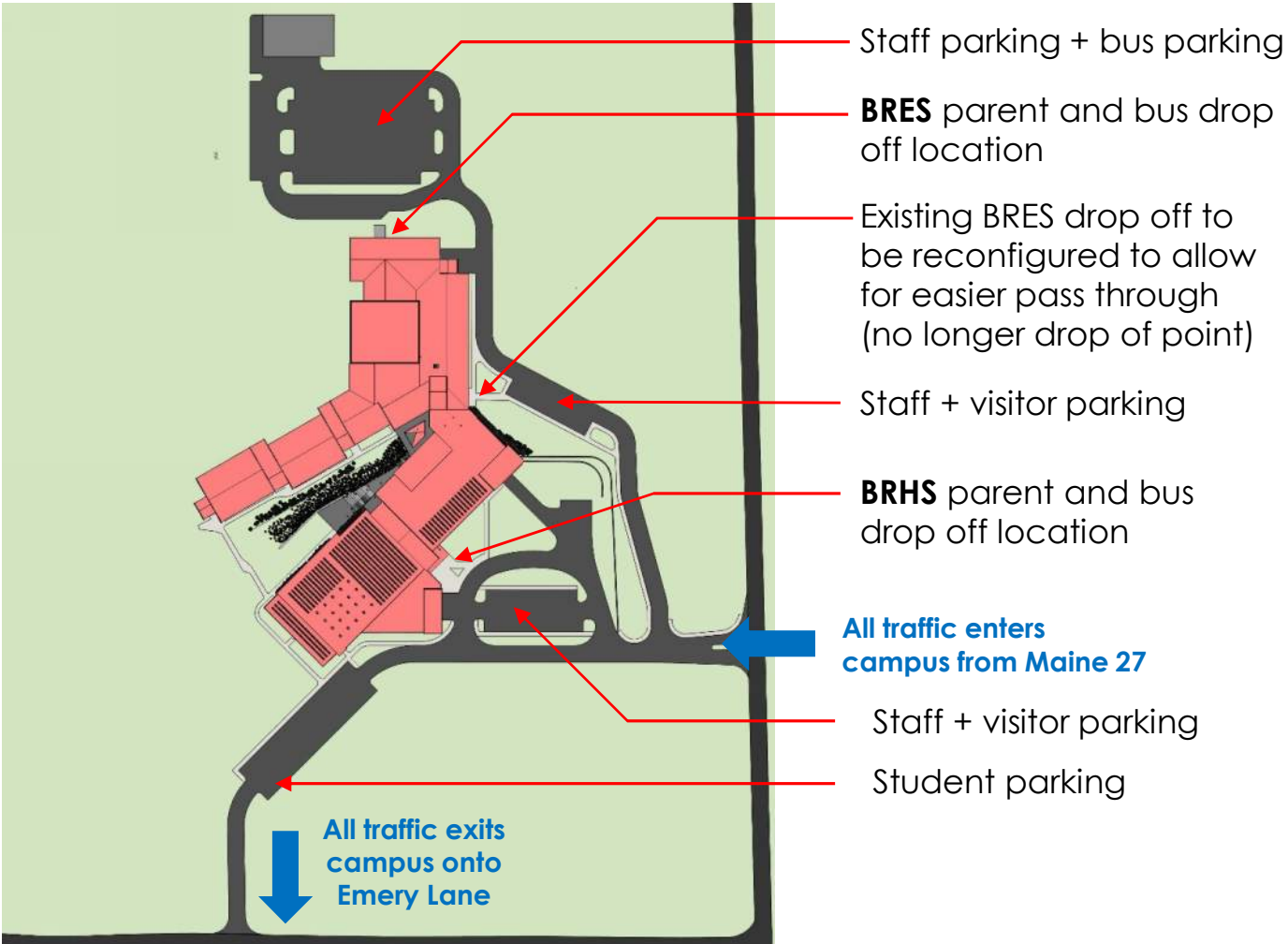
ATTENDANCE: Architects, BRES Principal, Superintendent

Vehicular Circulation



Vehicular Circulation

- Previous site plan had 212 parking spots. Parking to be reduced to accommodate a more efficient and safe vehicular flow.
- BRHS and BRES to have separate drop off locations
- BRES admin suite to move to upper floor at the North end
- Loading dock will no longer have a sloped approach to the building
- Site layout needs to provide safe access for students and staff from the school campus to the YMCA across the street
- All buses will be parked on site on the North lot



Focus Group + Floor Plan Updates



Focus Group: Notes

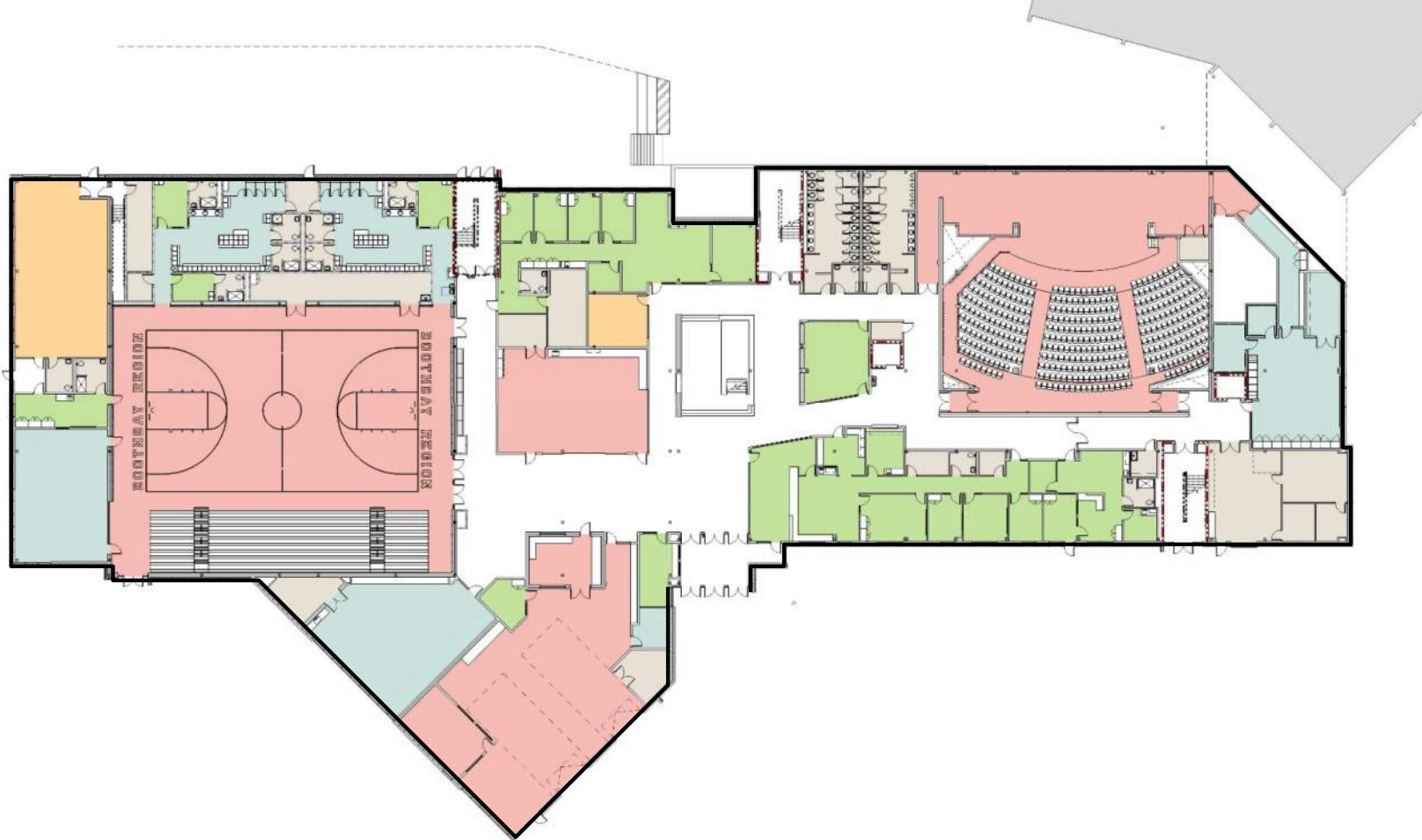
WE HAVE MET WITH

- ✓ BRHS Admin
- ✓ Food Services
- ✓ BRHS Guidance
- ✓ BRHS Athletics and Gym
- ✓ Lincoln Health Center Suite
- ✓ BRHS IT
- ✓ BRHS Library
- ✓ BRHS Maker Space North + South
- ✓ BRHS Performing Arts + Band
- ✓ BRHS Science Teachers
- ✓ Safety + Facilities

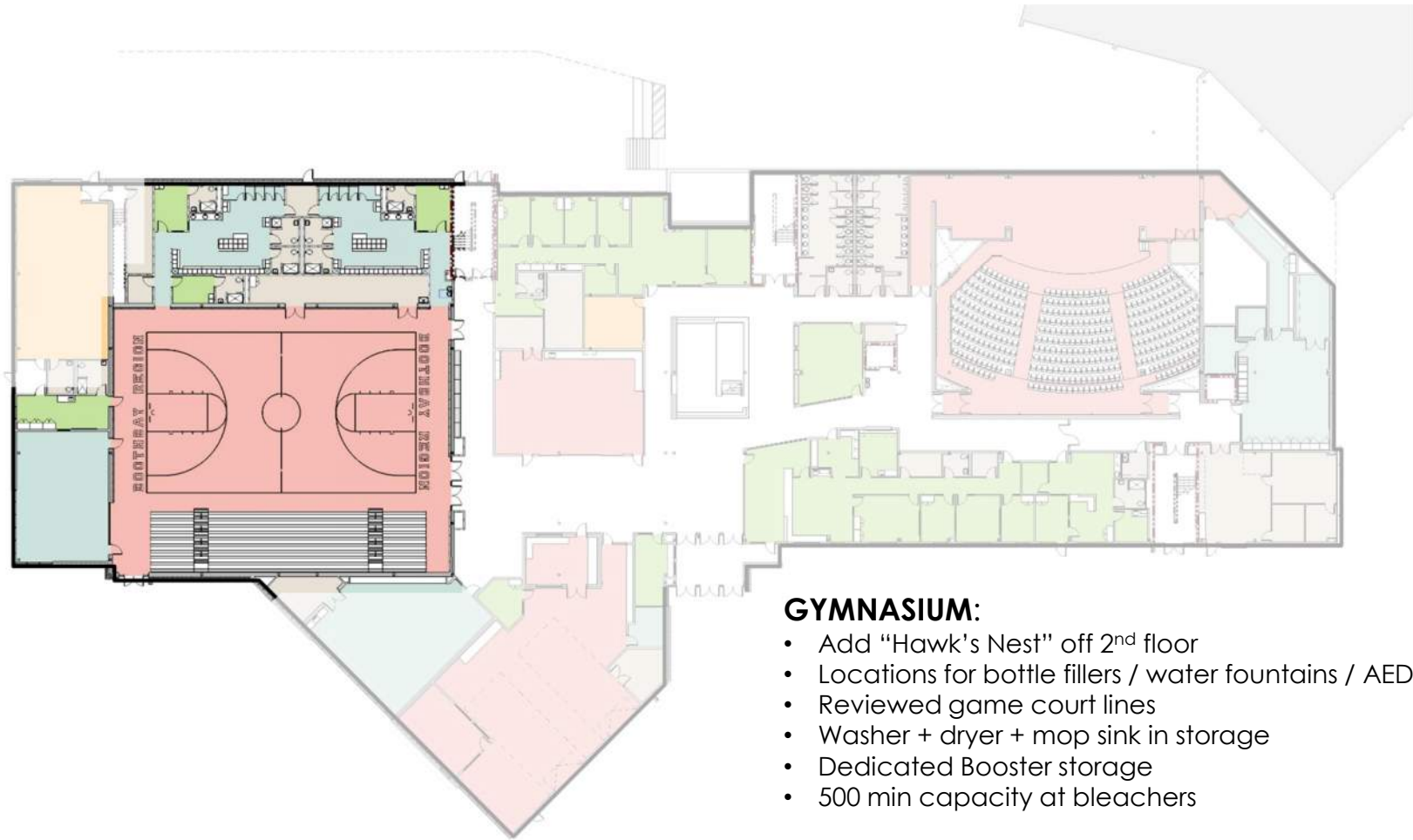
STILL NEED TO MEET WITH

- BRES Admin
- BRHS Teachers
- BRHS Students
- BRHS Art
- Special Education / Alternate School

Design Updates: Plans



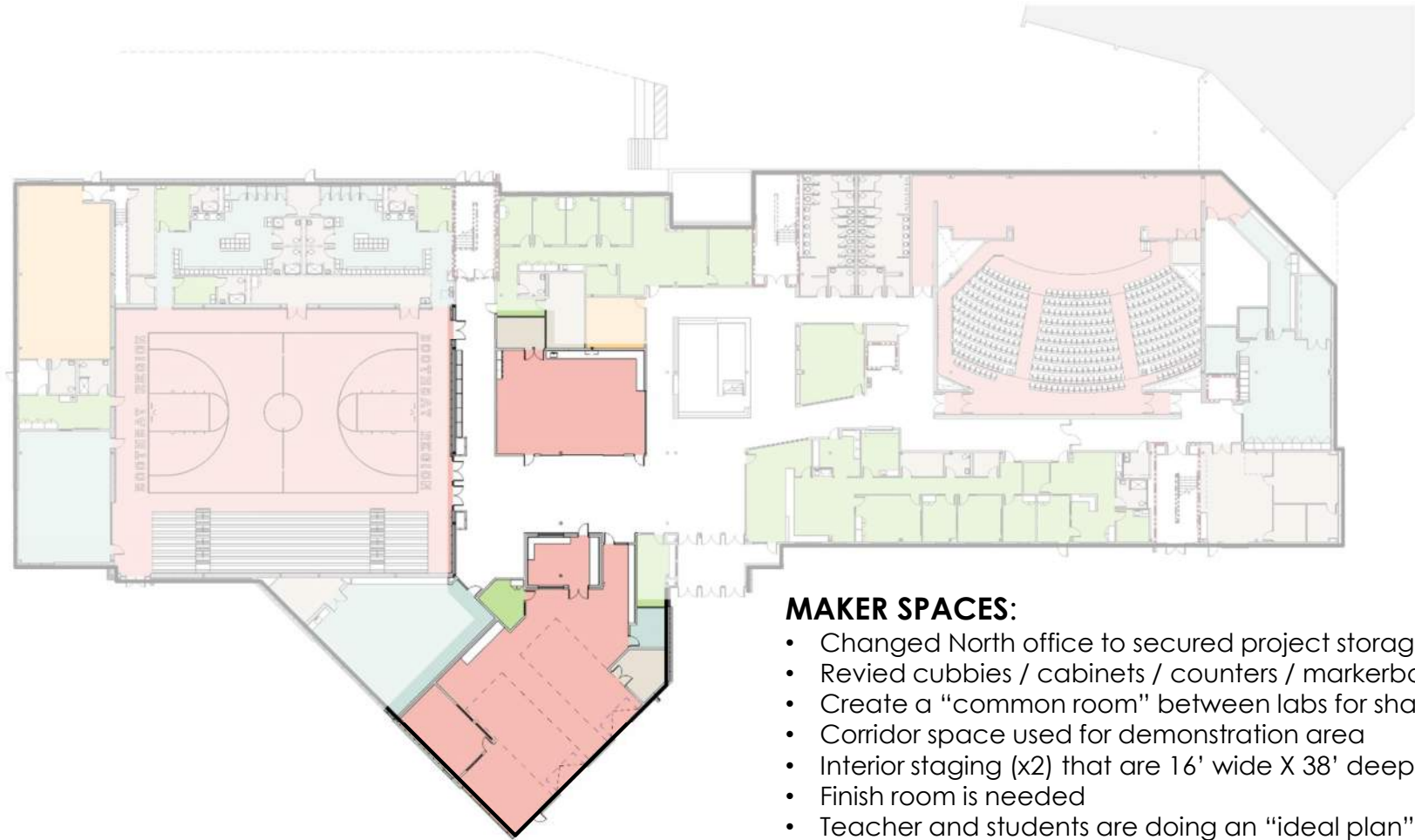
Design Updates: Plans



GYMNASIUM:

- Add "Hawk's Nest" off 2nd floor
- Locations for bottle fillers / water fountains / AED devices
- Reviewed game court lines
- Washer + dryer + mop sink in storage
- Dedicated Booster storage
- 500 min capacity at bleachers

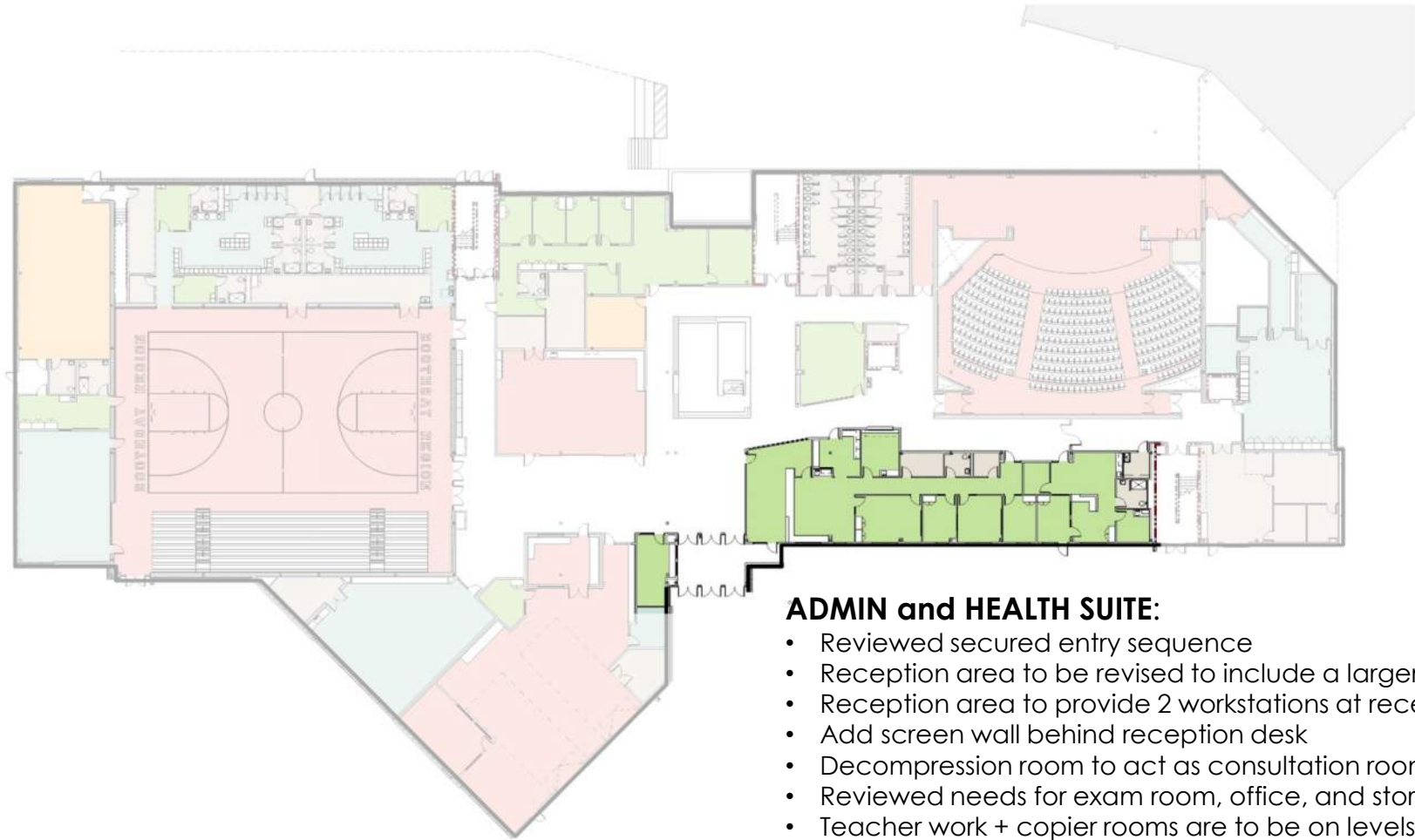
Design Updates: Plans



MAKER SPACES:

- Changed North office to secured project storage room
- Revised cubbies / cabinets / counters / markerboards / IT tech
- Create a "common room" between labs for shared equip.
- Corridor space used for demonstration area
- Interior staging (x2) that are 16' wide X 38' deep X 12' tall
- Finish room is needed
- Teacher and students are doing an "ideal plan" exercise

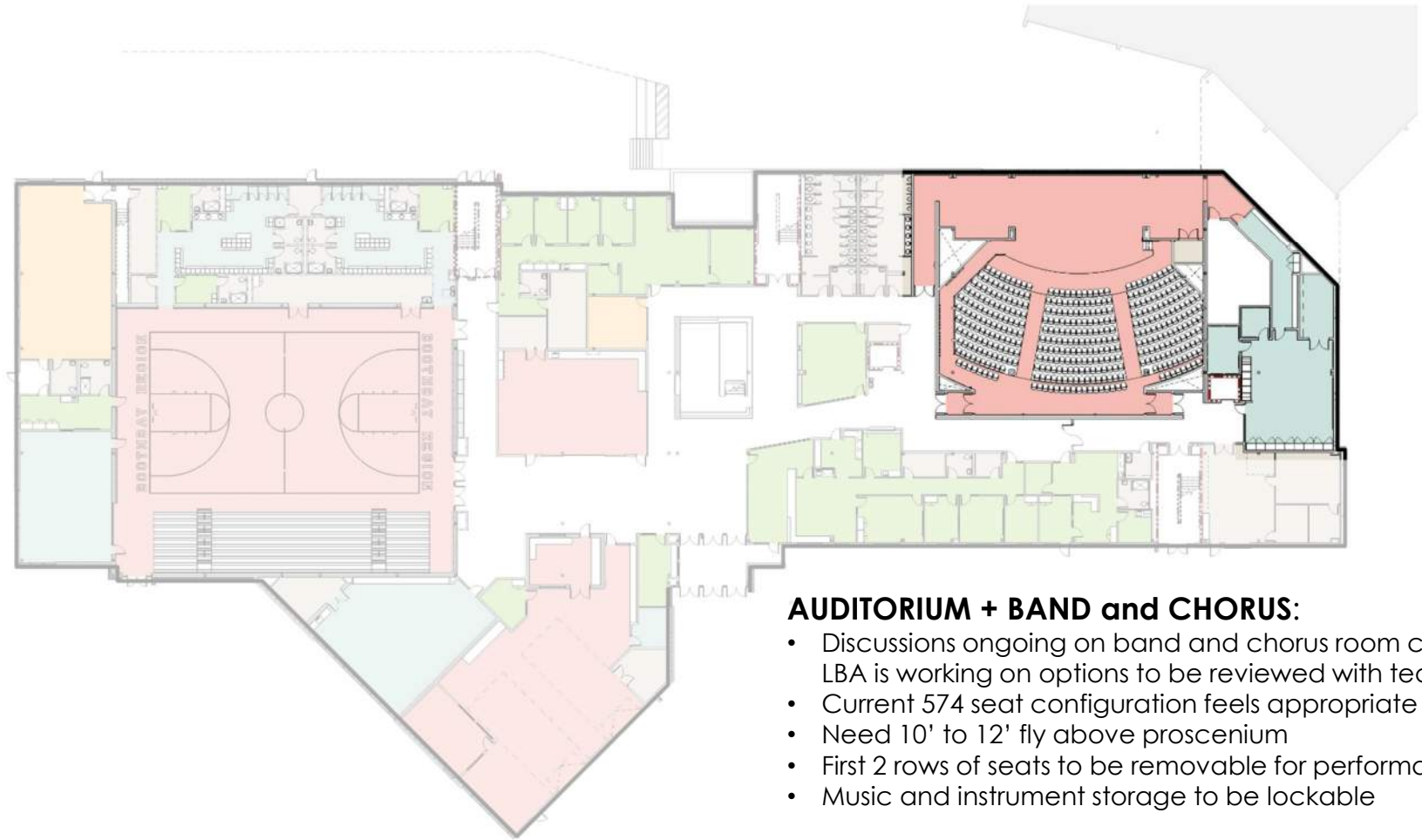
Design Updates: Plans



ADMIN and HEALTH SUITE:

- Reviewed secured entry sequence
- Reception area to be revised to include a larger work area
- Reception area to provide 2 workstations at reception desk
- Add screen wall behind reception desk
- Decompression room to act as consultation room
- Reviewed needs for exam room, office, and storage in health
- Teacher work + copier rooms are to be on levels 2 and 3

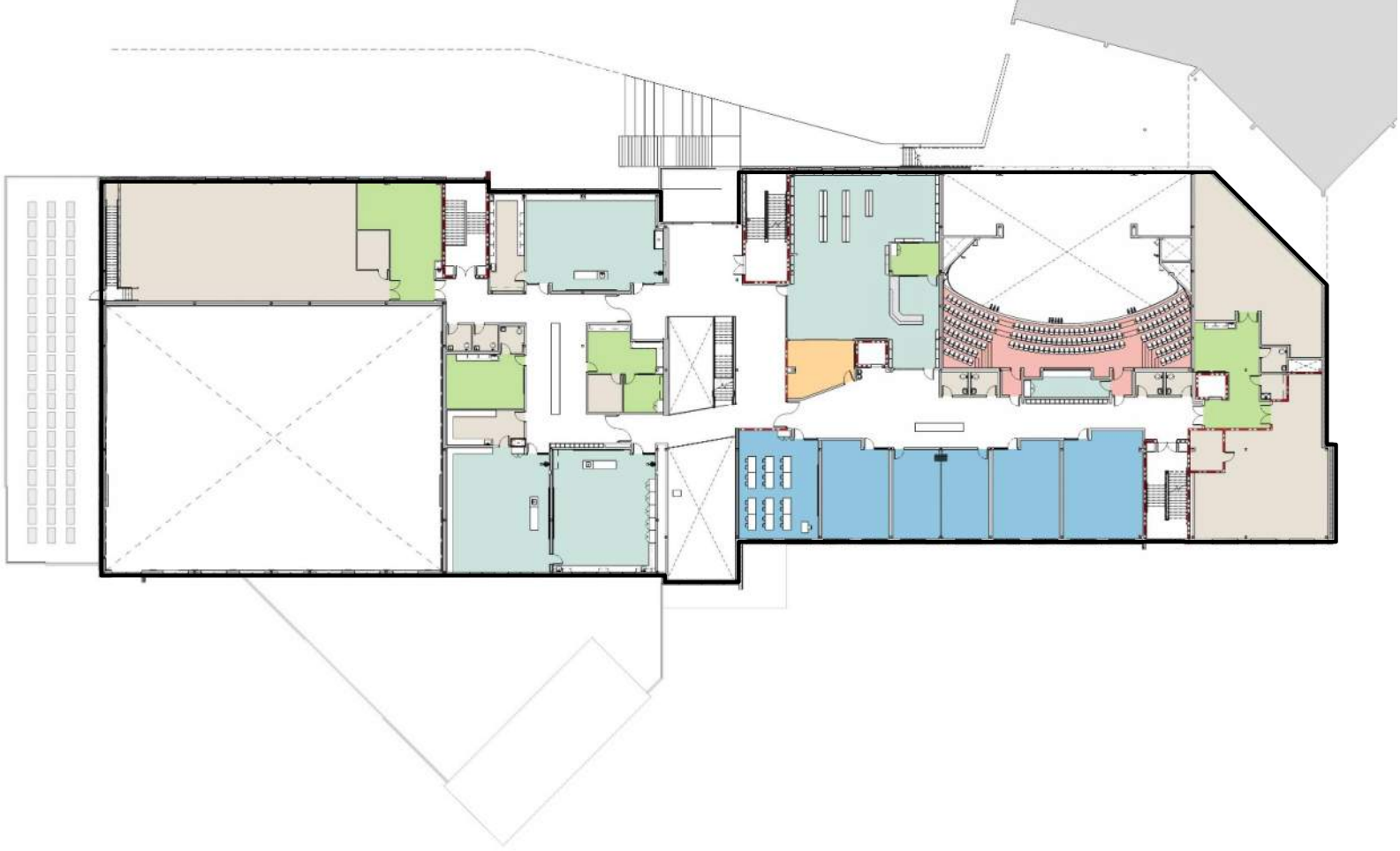
Design Updates: Plans



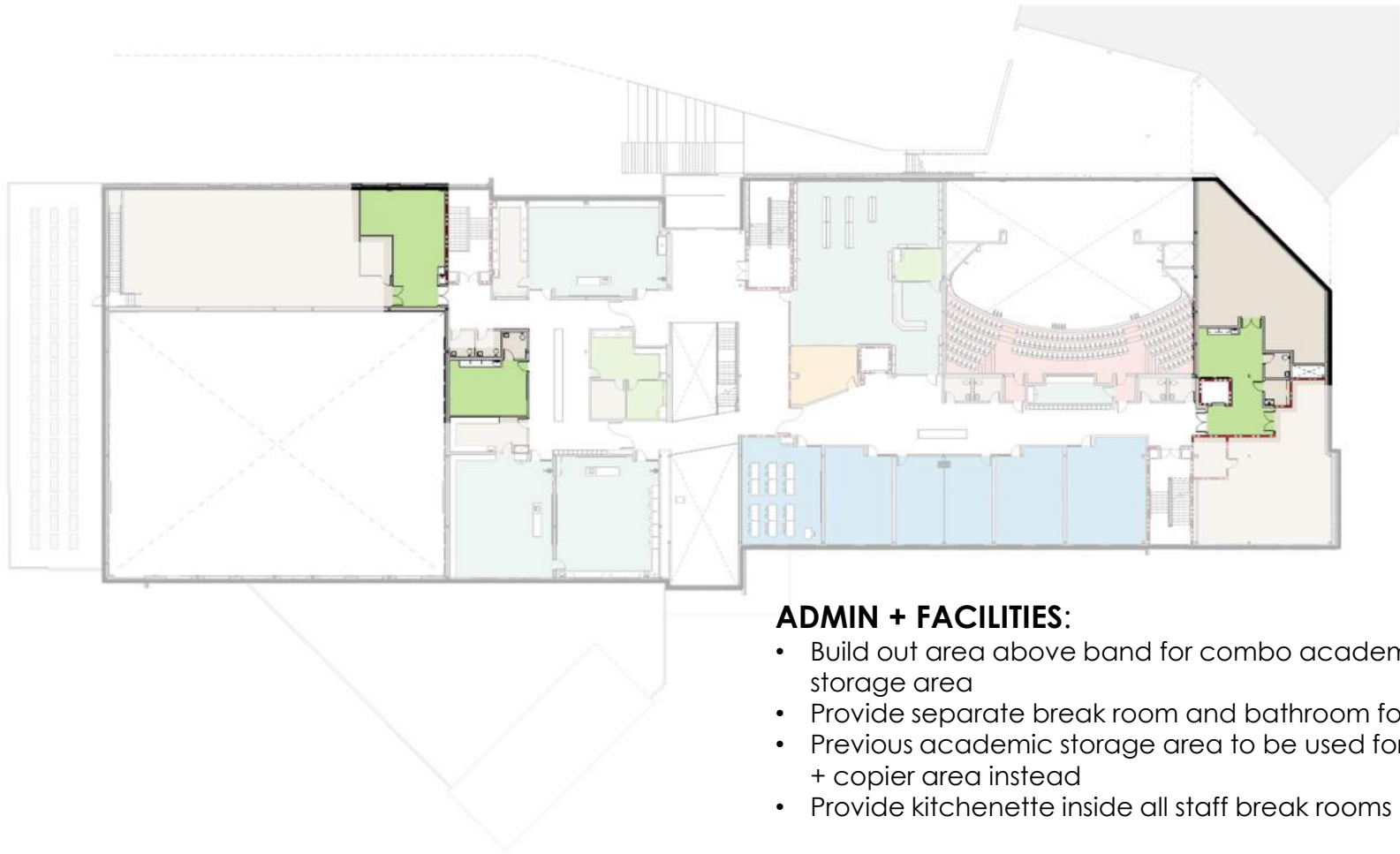
AUDITORIUM + BAND and CHORUS:

- Discussions ongoing on band and chorus room configurations. LBA is working on options to be reviewed with team
- Current 574 seat configuration feels appropriate per instructors
- Need 10' to 12' fly above proscenium
- First 2 rows of seats to be removable for performance flexibility
- Music and instrument storage to be lockable

Design Updates: Plans



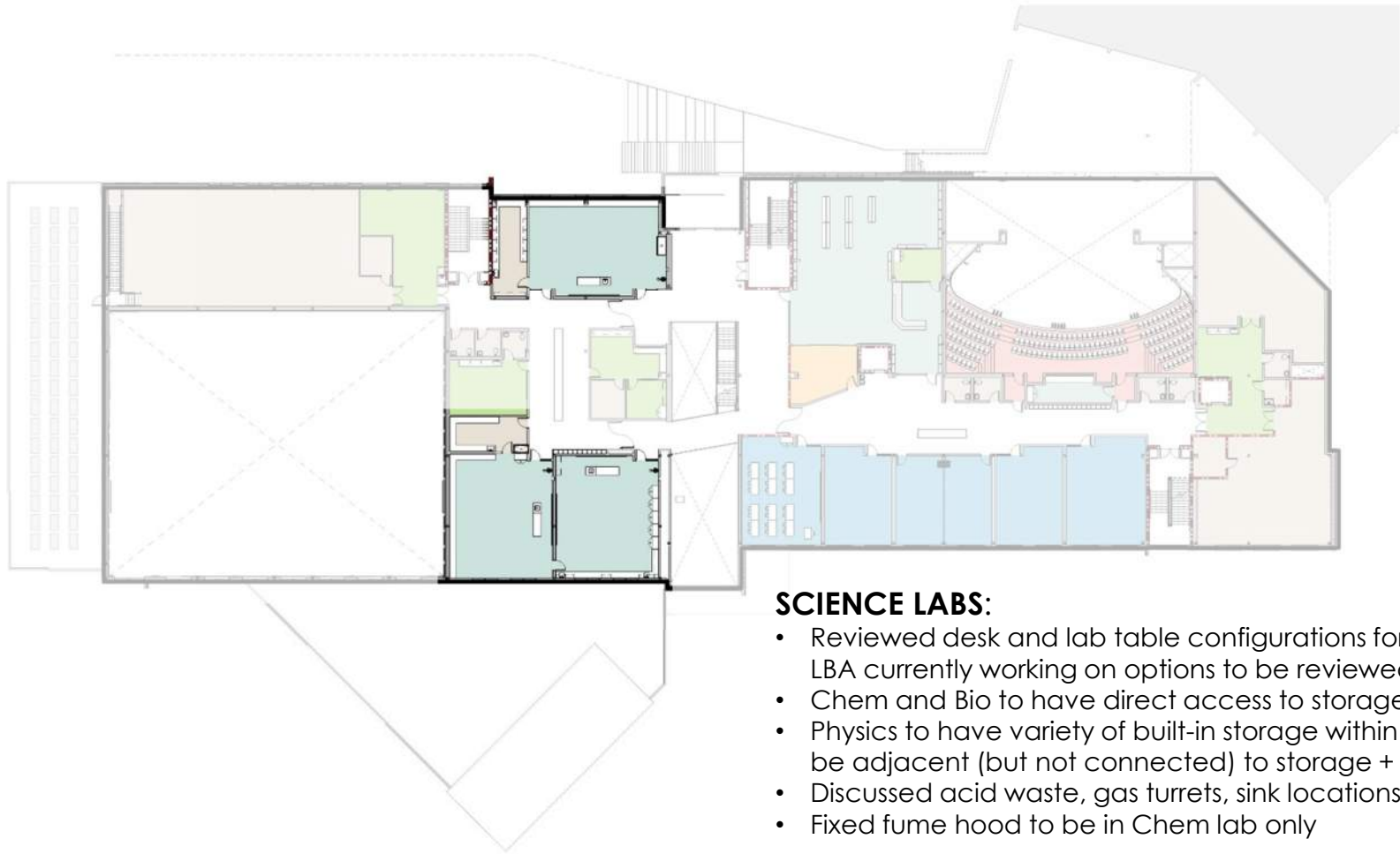
Design Updates: Plans



ADMIN + FACILITIES:

- Build out area above band for combo academic + facilities storage area
- Provide separate break room and bathroom for facilities
- Previous academic storage area to be used for teacher work + copier area instead
- Provide kitchenette inside all staff break rooms

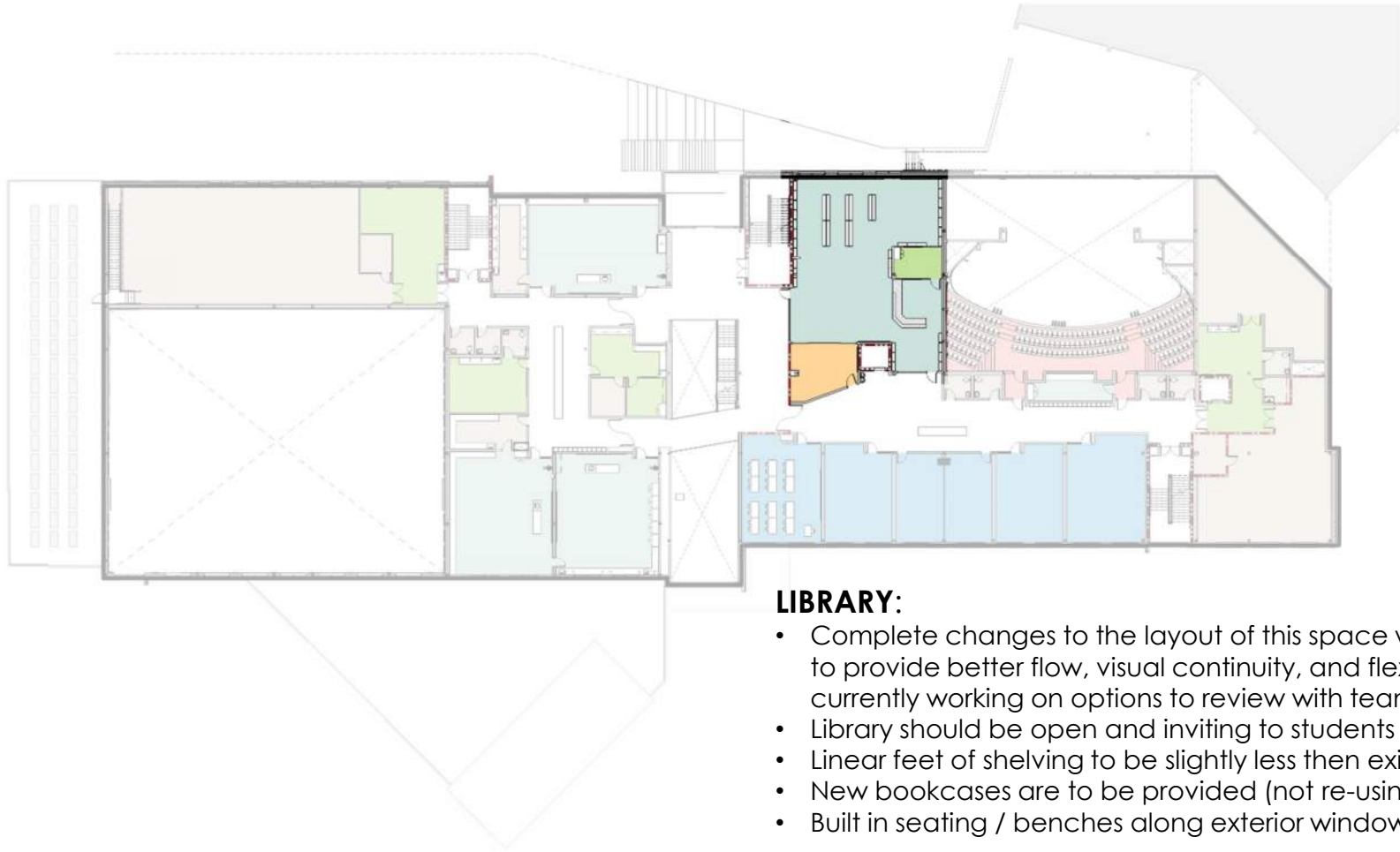
Design Updates: Plans



SCIENCE LABS:

- Reviewed desk and lab table configurations for each lab. LBA currently working on options to be reviewed with team
- Chem and Bio to have direct access to storage + prep rooms
- Physics to have variety of built-in storage within lab as well as be adjacent (but not connected) to storage + prep room
- Discussed acid waste, gas turrets, sink locations, and equip.
- Fixed fume hood to be in Chem lab only

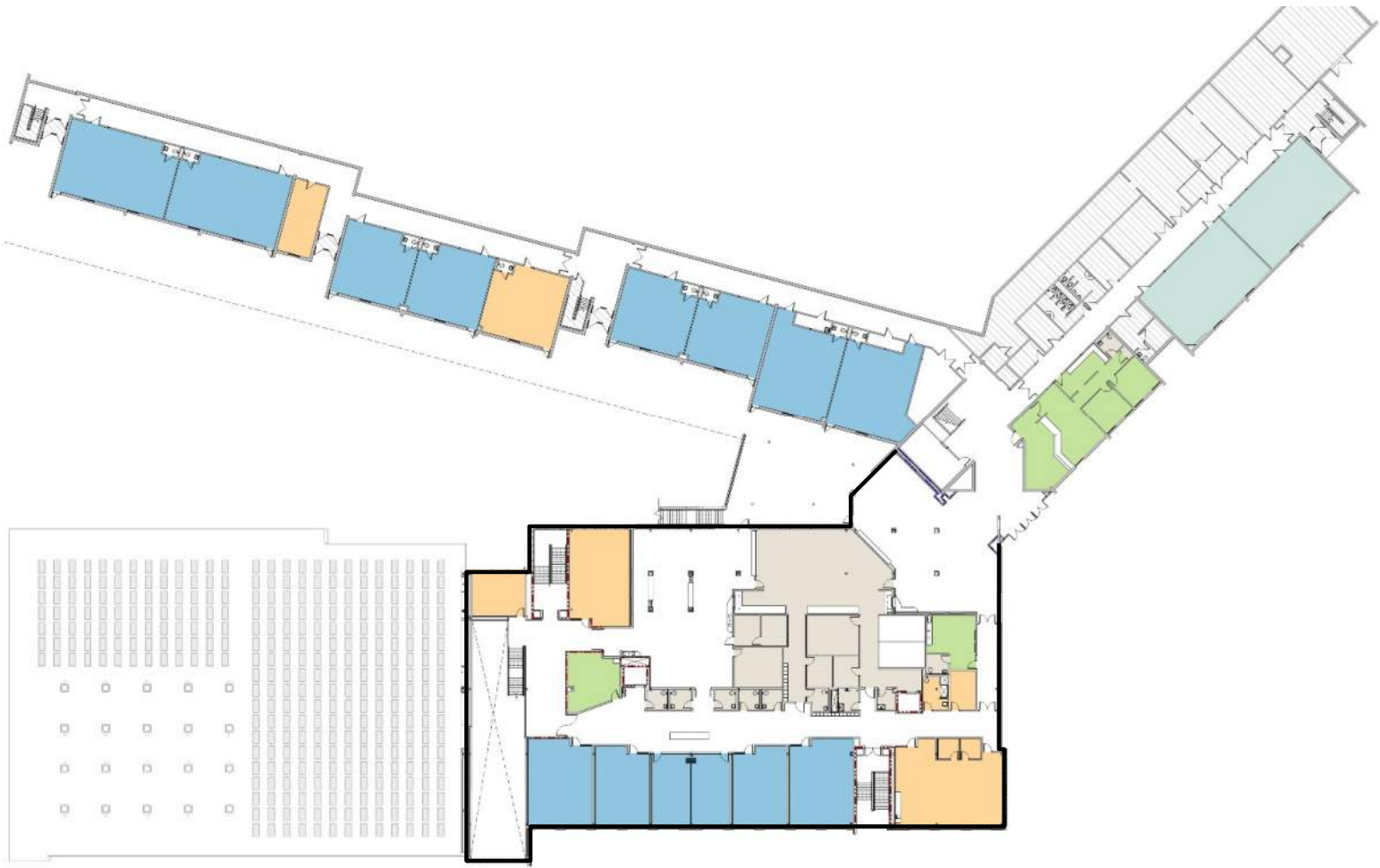
Design Updates: Plans



LIBRARY:

- Complete changes to the layout of this space was discussed to provide better flow, visual continuity, and flexibility. LBA currently working on options to review with team
- Library should be open and inviting to students
- Linear feet of shelving to be slightly less than existing
- New bookcases are to be provided (not re-using existing)
- Built in seating / benches along exterior windows

Design Updates: Plans



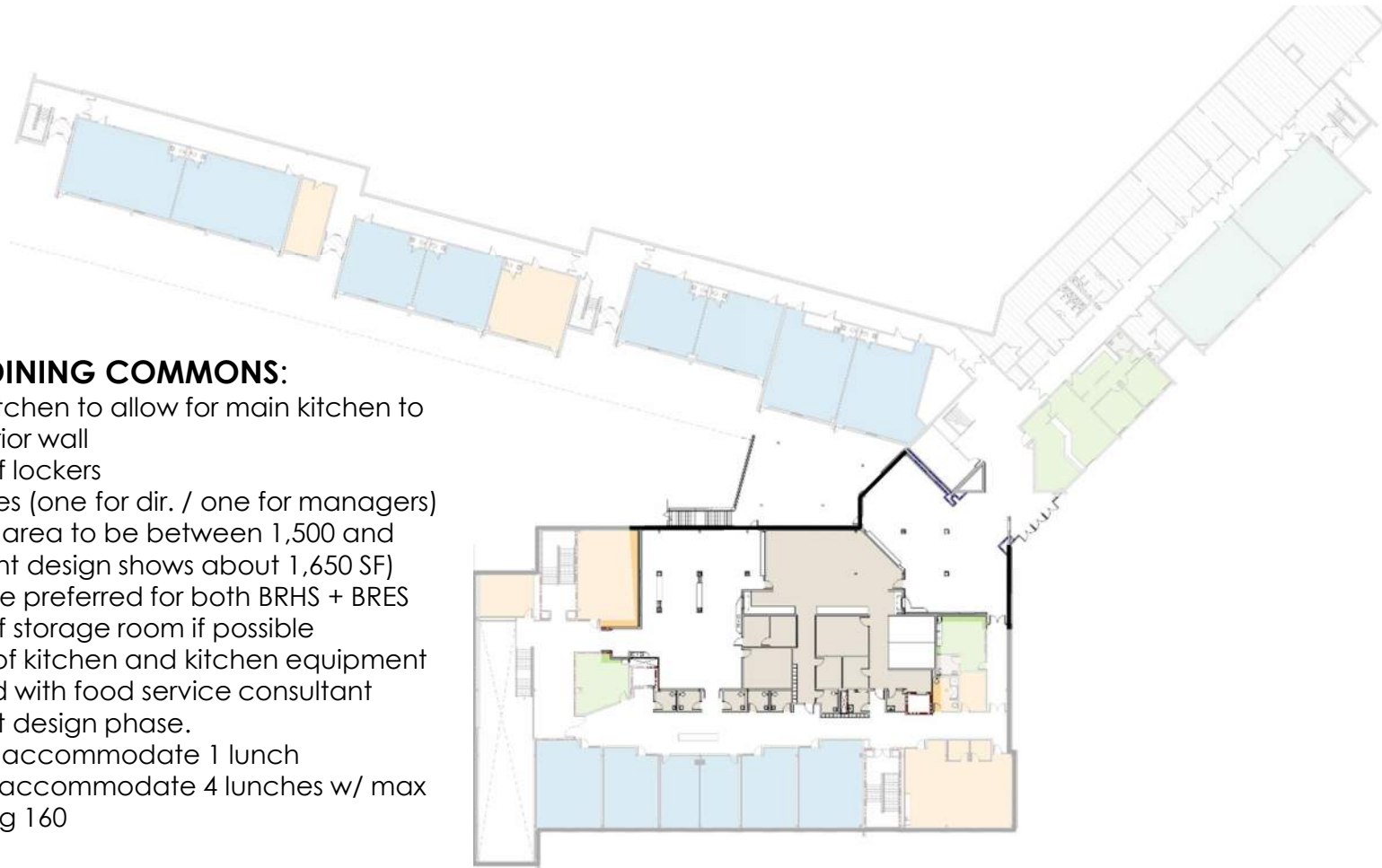
Design Updates: Plans



ADMIN at 3rd FLOOR:

- Previous group gathering area to be used for teacher work + copier area instead
- Group gathering has been relocated to the North end of the social stair
- Provide kitchenette inside staff break rooms

Design Updates: Plans



KITCHEN and DINING COMMONS:

- Reconfigure kitchen to allow for main kitchen to be along exterior wall
- Provide 10 staff lockers
- Provide 2 offices (one for dir. / one for managers)
- Target kitchen area to be between 1,500 and 1,700 SF (current design shows about 1,650 SF)
- Serving lines are preferred for both BRHS + BRES
- Increase size of storage room if possible
- Arrangement of kitchen and kitchen equipment to be reviewed with food service consultant during the next design phase.
- BRHS dining to accommodate 1 lunch
- BRES dining to accommodate 4 lunches w/ max lunch size being 160

Exterior: Design Update



Design Updates: Exterior Refinement



Design Updates: Exterior Refinement



Design Updates: Exterior Refinement



Design Updates: Exterior Refinement



Design Updates: Exterior Refinement



Design Updates: Exterior Refinement



Design Updates: Exterior Refinement



Discussion and Feedback: Exterior Design



COMMENTS

QUESTIONS



CONCERNS

Interior: Design Update



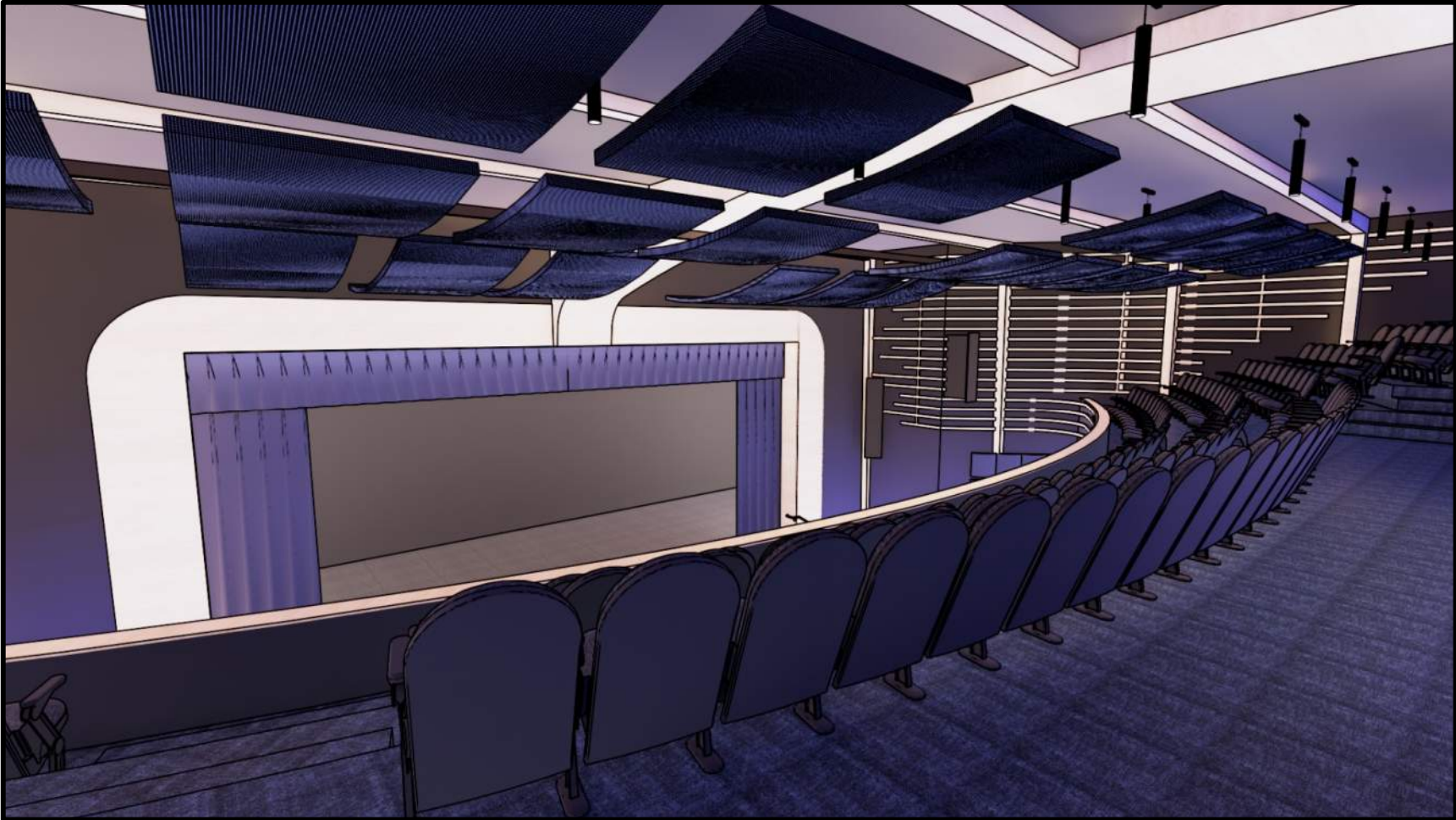
Interior Renderings: Auditorium



Interior Renderings: Auditorium



Interior Renderings: Auditorium



Discussion and Feedback: Auditorium



COMMENTS

QUESTIONS



CONCERNS

Interior Renderings: Dining Commons BRHS



Interior Renderings: Dining Commons BRHS



Interior Renderings: Dining Commons BRHS



Interior Renderings: Dining Commons BRHS



Discussion and Feedback: Dining BRHS



COMMENTS

QUESTIONS



CONCERNS

Interior Renderings: Dining Commons BRES



Interior Renderings: Dining Commons BRES



Interior Renderings: Dining Commons BRES



Discussion and Feedback: Dining BRES



COMMENTS

QUESTIONS



CONCERNS