

# LDING DIAGRAM: CONCEPT #2

MS: RENOVATION + ADDITION  
 HS: NEW BUILDING (SOUTH SITE)

## NOTATION:

#2 utilizes the existing BREMS building with the additions & renovations detailed in Concept #1 but proposes a new stand-alone building for the high school located just to the south of the BREMS building.

The high school is proposed as a 3-story building design to provide a modern, learning environment for students as well as public resource spaces for the community. Built into the sharply sloped site, the school has at grade entrances on the north and south sides that are intended for a distinct user group.

The first floor serves as the primary public entrance to the building. This floor contains all public resource spaces that could be accessible to the public, including the competition gym, a 200 seat auditorium, and the shop/maker areas. The Alt program is also located on the first floor with a dedicated entrance.

The second floor serves as the main high school student entrance. The entrance is located on one side by the administrative suite, and on the other by the learning commons and the upper level of the auditorium. The weight room, science labs, and education suite round out the second floor spaces. An open stair and atrium connect students to the 3rd floor of the high school. This floor forms the primary core of the building, containing the classroom clusters with their dedicated learning and resource spaces. Built at grade with the BREMS lower level, the footprint of the new school pulls back from the BREMS building, allowing a flat green roof /courtyard infill between the two buildings. An entrance on this level allows BREMS students to enter the high school building to share use of the auditorium.

The MS addition and renovation boasts all the same benefits detailed in Concept #1, including a distinct middle school entrance and identity and new kitchen and cafeteria for both middle and elementary school students.

Opportunities for community access to competition gym, 200 seat auditorium, and shop while limiting access to dedicated student spaces.

Opportunities for team teaching with subject matter classroom clusters sharing learning spaces.

All classrooms are properly sized per DOE recommendations.

Adequate space to add Alt Program and Autism Spectrum Program.

MS addition: New green roof offers sheltered exterior space for outdoor learning.

MS addition: New middle school addition with their own entrance and own courtyard.

MS addition: Dedicated gym entrance for the public.

MS addition: All gang bathrooms replaced with single user bathrooms for students and staff.

MS addition: All shared K-8 spaces (music, art, library, gym, etc.) are centrally located between both schools.

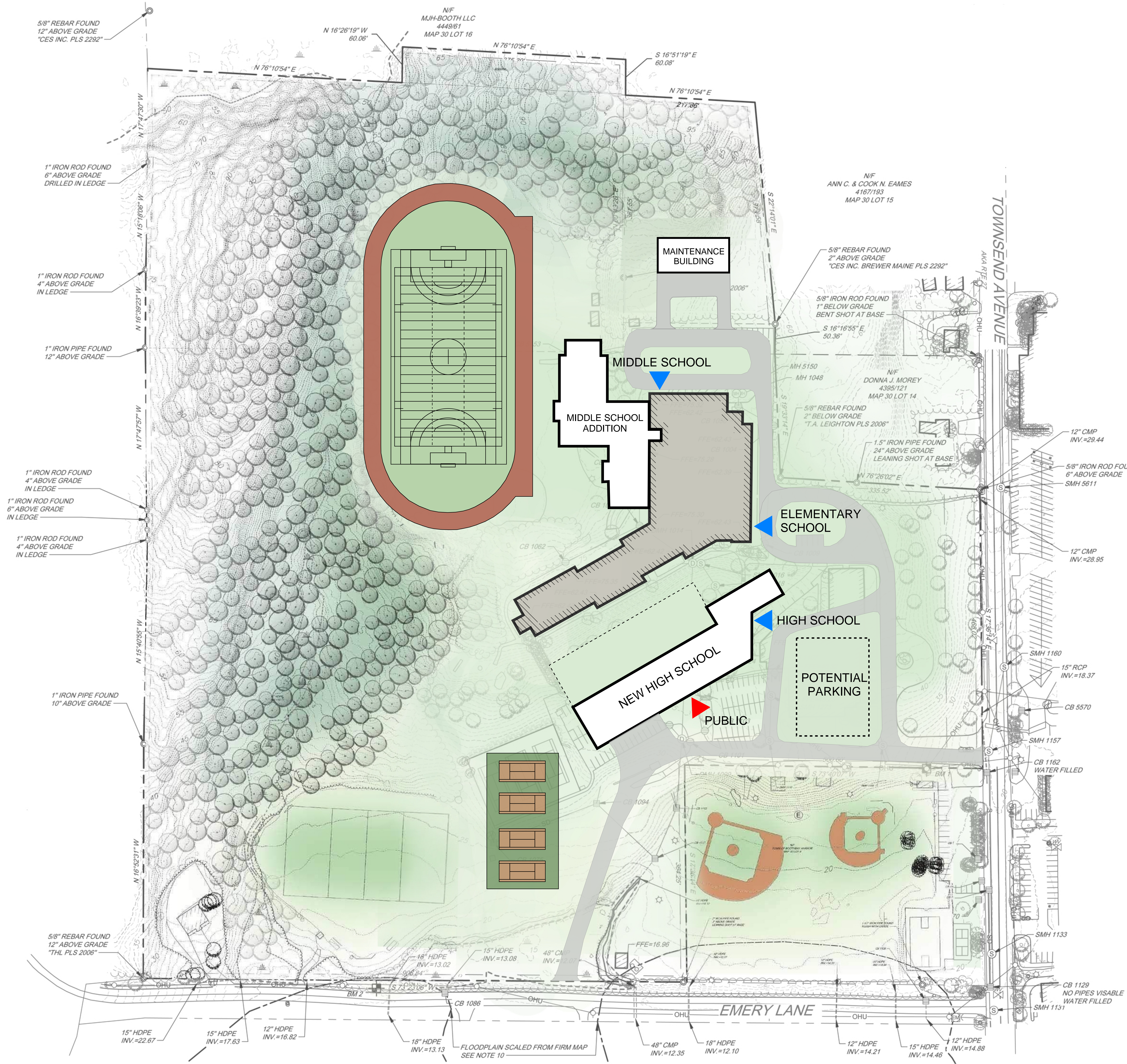
MS addition: Central administration area and staff break rooms on both floors.

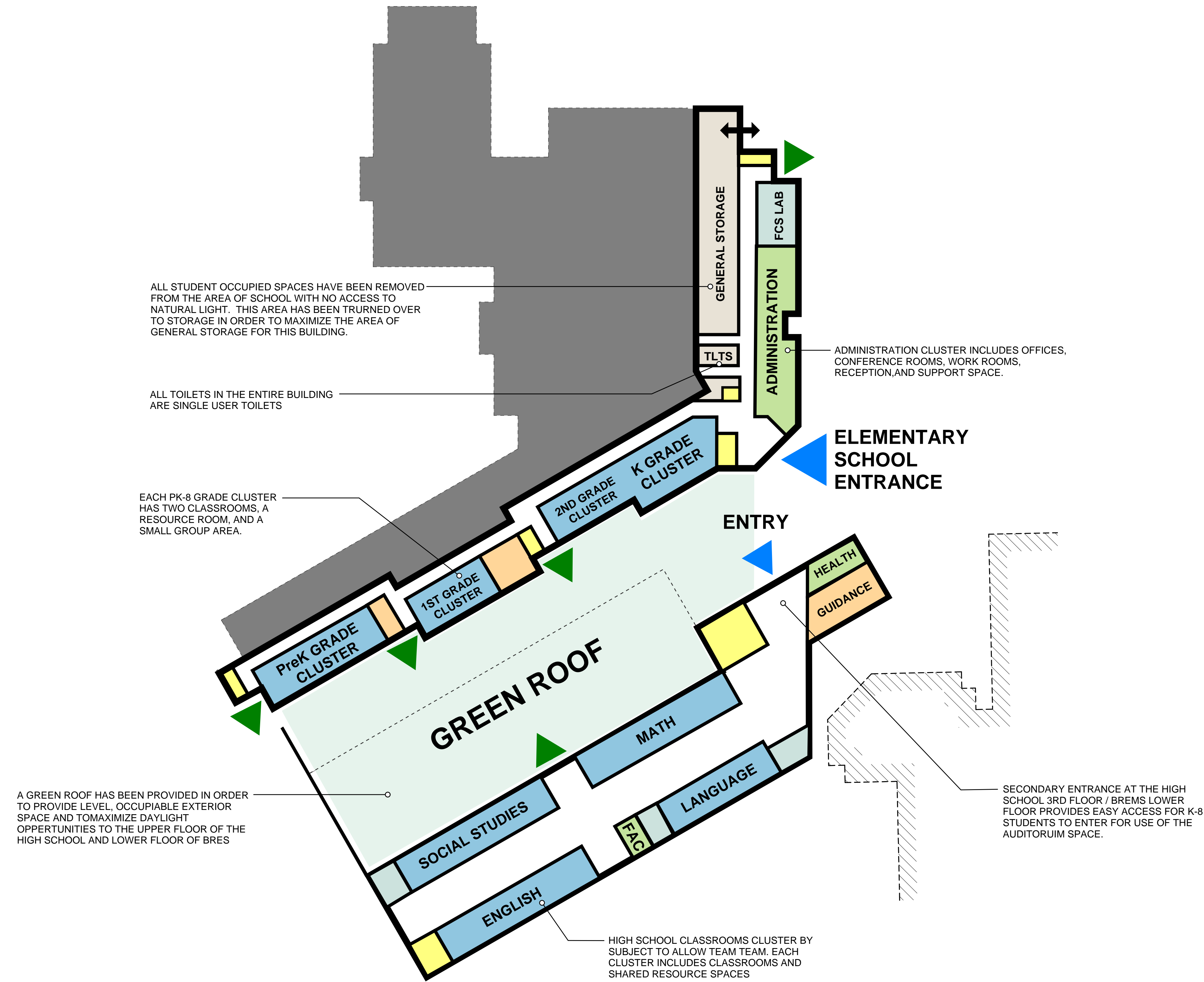
MS addition: All student and staff spaces have direct access to natural light.

MS addition: site limits daylight access from the north on the lower levels.

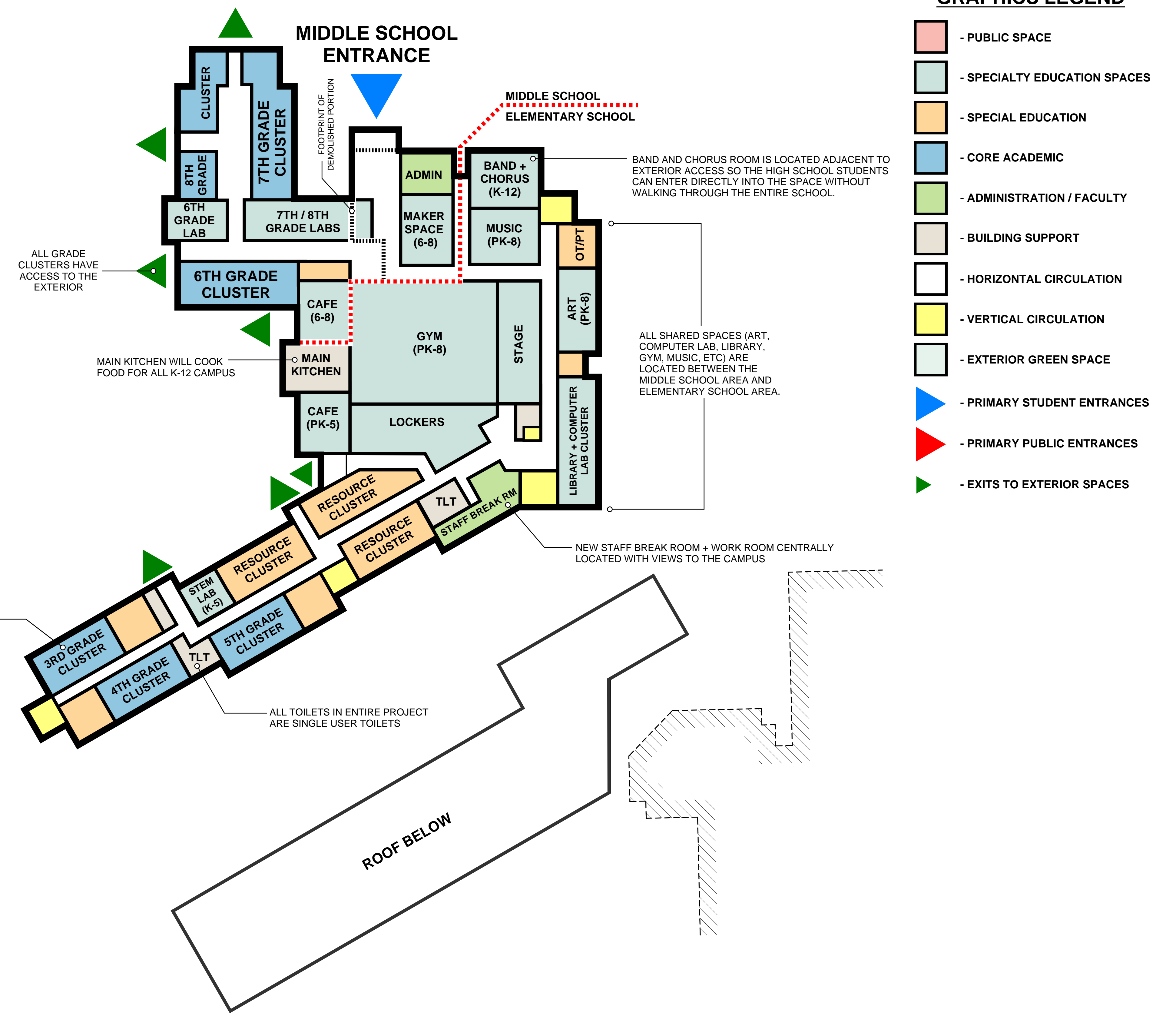
MS addition: High school building footprint is constrained by need to keep existing high school building for the construction duration.

MS addition: Maintenance area located in BREMS has to be relocated to a stand alone building in order to make this concept work.

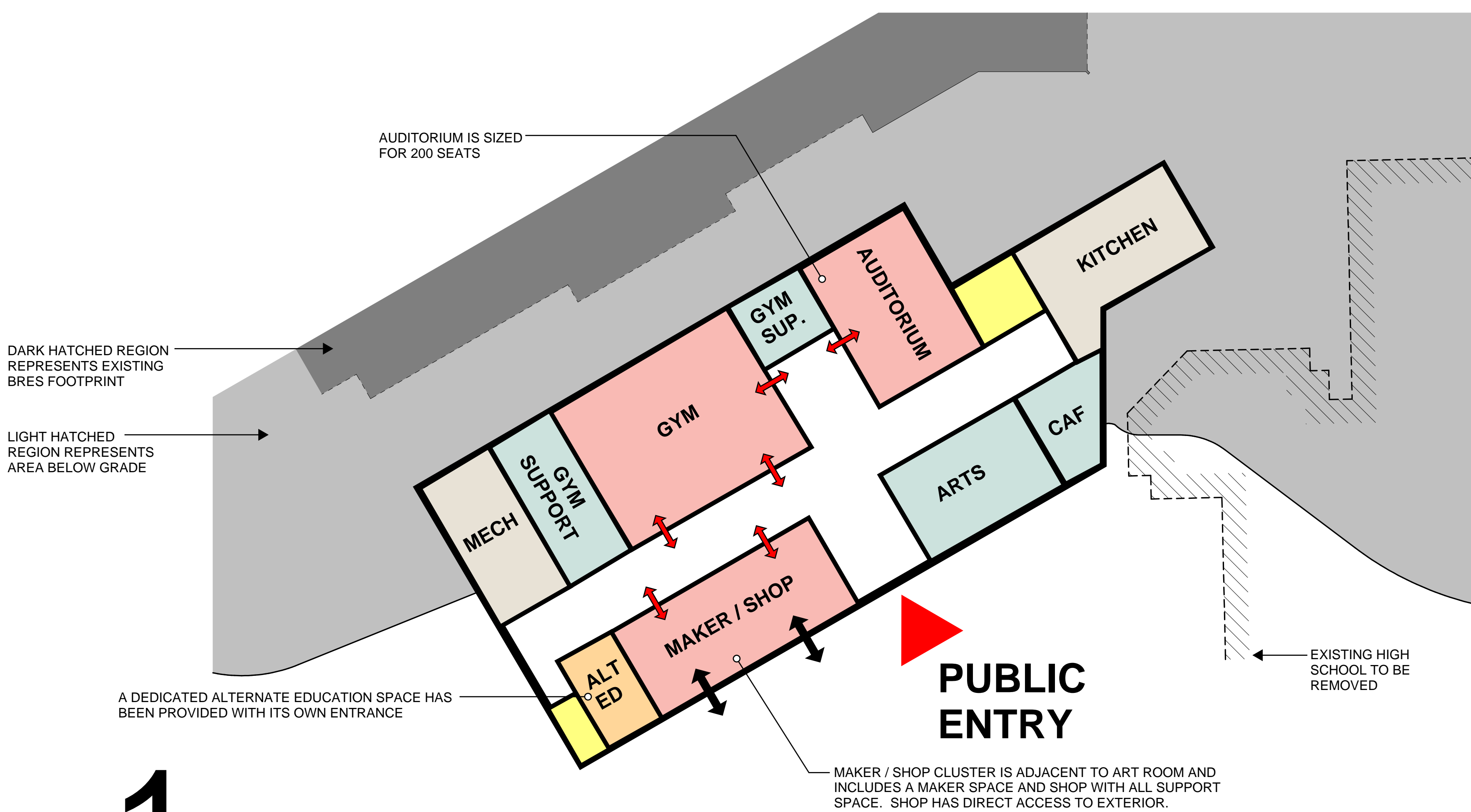




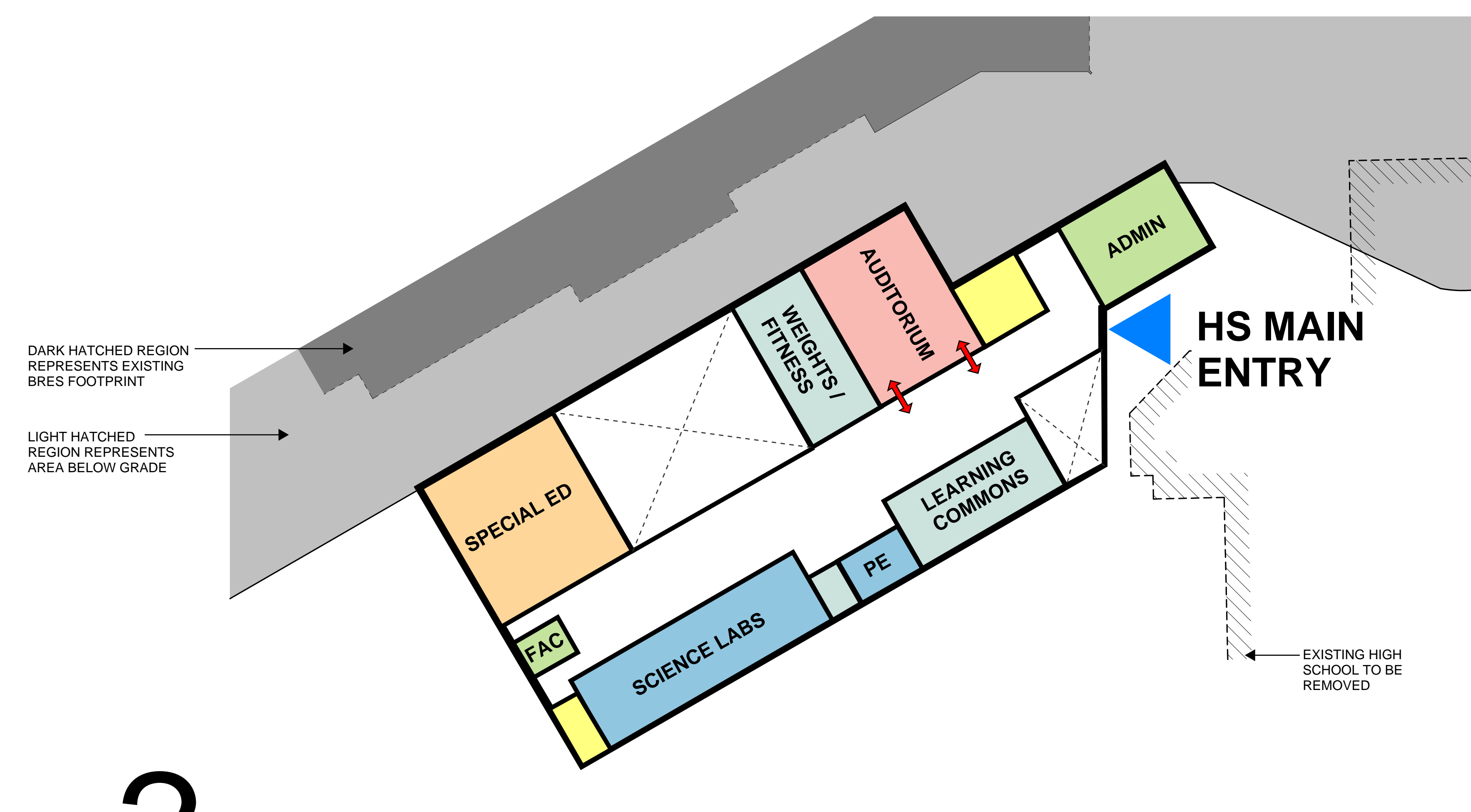
**3RD HIGH SCHOOL THIRD FLOOR / ELEMENTARY SCHOOL LOWER LEVEL**



**4TH ELEMENTARY SCHOOL UPPER LEVEL**



**1ST HIGH SCHOOL FIRST FLOOR**



**2ND HIGH SCHOOL SECOND FLOOR**

**GRAPHICS LEGEND**

- PUBLIC SPACE
- SPECIALTY EDUCATION SPACES
- SPECIAL EDUCATION
- CORE ACADEMIC
- ADMINISTRATION / FACULTY
- BUILDING SUPPORT
- HORIZONTAL CIRCULATION
- VERTICAL CIRCULATION
- EXTERIOR GREEN SPACE
- PRIMARY STUDENT ENTRANCES
- PRIMARY PUBLIC ENTRANCES
- EXITS TO EXTERIOR SPACES