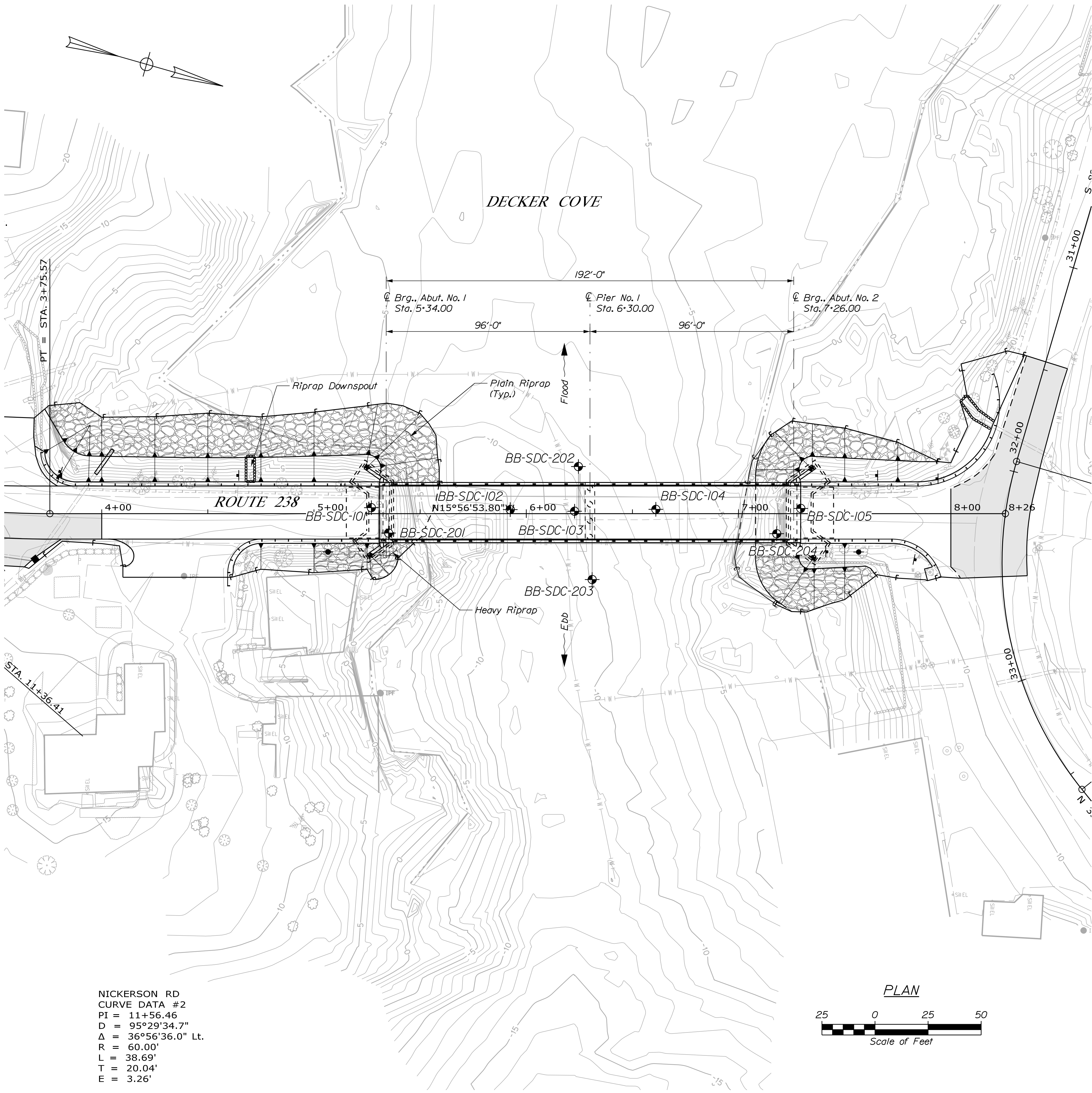


Date: 3/1/2019

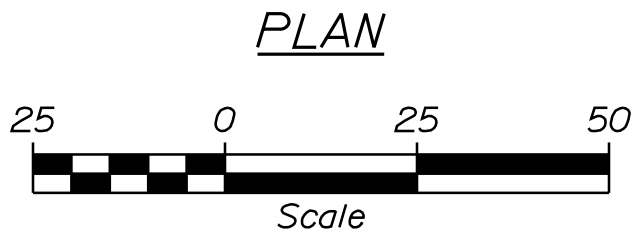
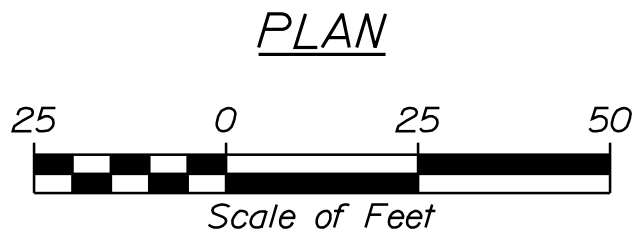
Username: dataylor

Division: BRIDGE

Filename: ...\\00\\BRIDGE\\MSTA\\006_BLP.DGN



NICKERSON RD
CURVE DATA #2
PI = 11+56.46
D = 95°29'34.7"
Δ = 36°56'36.0" Lt.
R = 60.00'
L = 38.69'
T = 20.04'
E = 3.26'



NOTES

- 1) Base map developed from electronic files provided by Stantec on August 16, 2016 (Files included 002_GeneralPlan.dgn, BDPLAN.dgn, contours.dgn, and 3DTopo_10aug16.dgn) and on January 24, 2019 (bridge.dgn).
- 2) The as drilled locations of the test borings were estimated by taping to existing bridge structural elements and should be considered approximate.
- 3) BB-SDC-100 series bridge borings were performed by New England Boring Contractors and observed by GZA personnel between May 24 and May 27, 2016.
- 4) BB-SDC-200 series bridge borings were performed by New England Boring Contractors and observed by GZA personnel between November 13, 2018 and December 27, 2018.

LEGEND

BB-SDC-204 Location and designation of cased wash boring

STATE OF MAINE DEPARTMENT OF TRANSPORTATION		STP-1874(800)		BRIDGE NO. 2848		WIN 18748.00		BRIDGE PLANS	
THOMPSONS BRIDGE DECKER COVE SOUTHPORT LINCOLN COUNTY		BORING LOCATION PLAN		SHEET NUMBER		6		OF 43	
PROJ. MANAGER		L. TIMBERLAKE		BY		DATE		SIGNATURE	
DESIGNED-DETAILED		NW		CLS		FEB 2019		10957	
CHECKED-REVIEWED		ARB				FEB 2019		P.E. NUMBER	
DESIGNS-DETAILED								02/21/2019	
DESIGNS 1								DATE	
REVISIONS 2									
REVISIONS 3									
REVISIONS 4									
FIELD CHANGES									

PREPARED BY:
GZA

